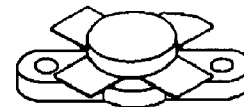


**MS1051**
**RF & MICROWAVE TRANSISTORS  
HF SSB APPLICATIONS**
**Features**

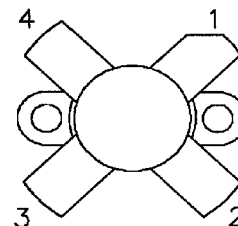
- **30 MHz**
- **12.5 VOLTS**
- **P<sub>OUT</sub> = 100 WATTS**
- **G<sub>PE</sub> = 12.0 dB MINIMUM**
- **IMD = -30 dBc**
- **GOLD METALLIZATION**
- **COMMON EMITTER CONFIGURATION**

**DESCRIPTION:**

The MS1051 is a 12.5 V Class C epitaxial silicon NPN planar transistor designed primarily for HF communications. This device utilizes state-of-the-art diffused emitter ballasting to achieve extreme ruggedness under severe operating conditions.



**.500 4LFL (M174)**  
epoxy sealed

**PIN CONNECTION**


- |              |            |
|--------------|------------|
| 1. Collector | 3. Base    |
| 2. Emitter   | 4. Emitter |

**ABSOLUTE MAXIMUM RATINGS (T<sub>case</sub> = 25°C)**

Symbol	Parameter	Value	Unit
V <sub>CBO</sub>	Collector-Base Voltage	36	V
V <sub>CEO</sub>	Collector-Emitter Voltage	18	V
V <sub>EBO</sub>	Emitter-Base Voltage	4.0	V
I <sub>C</sub>	Device Current	20	A
P <sub>DISS</sub>	Power Dissipation	290	W
T <sub>J</sub>	Junction Temperature	+200	°C
T <sub>STG</sub>	Storage Temperature	-65 to +150	°C

**THERMAL DATA**

R <sub>TH(J-C)</sub>	Thermal Resistance Junction-case	0.6	°C/W
----------------------	----------------------------------	-----	------

**ELECTRICAL SPECIFICATIONS (T<sub>case</sub> = 25°C)**
**STATIC**

Symbol	Test Conditions		Value			Unit
			Min.	Typ.	Max.	
<b>BV<sub>CBO</sub></b>	<b>I<sub>C</sub> = 100mA</b>	<b>I<sub>E</sub> = 0mA</b>	<b>36</b>	---	---	<b>V</b>
<b>BV<sub>CES</sub></b>	<b>I<sub>C</sub> = 100mA</b>	<b>V<sub>BE</sub> = 0V</b>	<b>36</b>	---	---	<b>V</b>
<b>BV<sub>CEO</sub></b>	<b>I<sub>C</sub> = 10mA</b>	<b>I<sub>B</sub> = 0mA</b>	<b>18</b>	---	---	<b>V</b>
<b>BV<sub>EBO</sub></b>	<b>I<sub>E</sub> = 20mA</b>	<b>I<sub>C</sub> = 0mA</b>	<b>4.0</b>	---	---	<b>V</b>
<b>I<sub>CES</sub></b>	<b>V<sub>CE</sub> = 15V</b>	<b>I<sub>C</sub> = 0mA</b>	---	---	<b>20</b>	<b>mA</b>
<b>h<sub>FE</sub></b>	<b>V<sub>CE</sub> = 5V</b>	<b>I<sub>C</sub> = 5A</b>	<b>20</b>	---	<b>200</b>	---

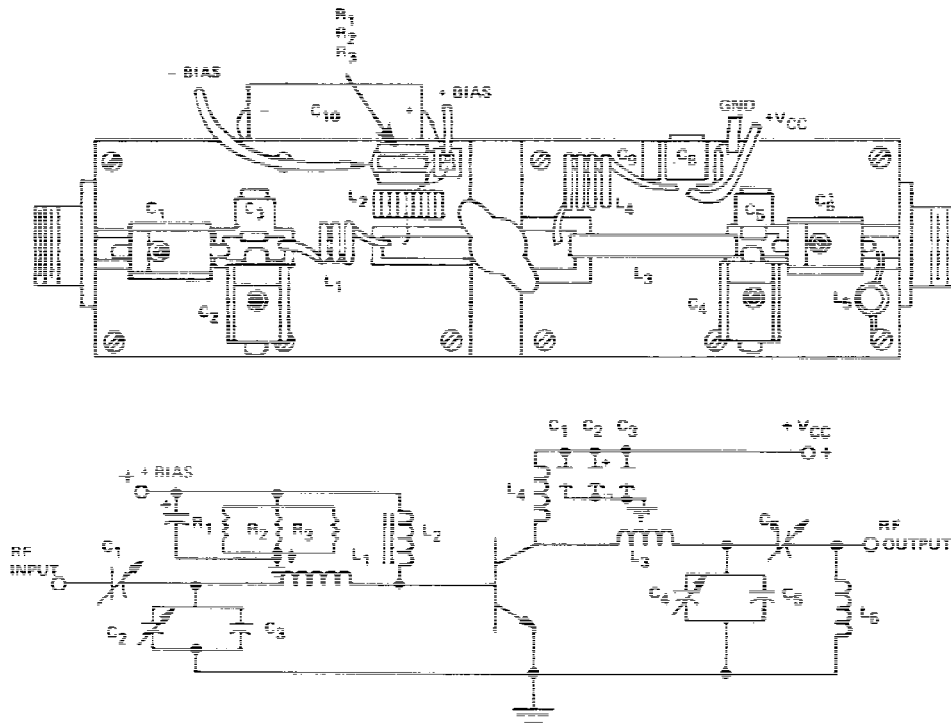
**DYNAMIC**

Symbol	Test Conditions			Value			Unit
				Min.	Typ.	Max.	
<b>P<sub>OUT</sub></b>	<b>f = 30 MHz</b>	<b>V<sub>CE</sub> = 12.5 V</b>	<b>I<sub>CQ</sub> = 150mA</b>	<b>100</b>	---	---	<b>W</b>
<b>G<sub>P</sub></b>	<b>f = 30 MHz</b>	<b>V<sub>CE</sub> = 12.5 V</b>	<b>I<sub>CQ</sub> = 150mA</b>	<b>11</b>	<b>13</b>	---	<b>dB</b>
<b>IMD<sub>3</sub>*</b>	<b>P<sub>OUT</sub> = 100 W PEP</b>	<b>V<sub>CE</sub> = 12.5 V</b>	<b>I<sub>CQ</sub> = 150mA</b>	---	---	<b>-30</b>	<b>dBc</b>
<b>C<sub>OB</sub></b>	<b>f = 1 MHz</b>	<b>V<sub>CB</sub> = 12.5 V</b>		---	<b>400</b>	---	<b>pf</b>
<b>Condition</b>	<b>f1 = 30.000MHz</b>	<b>f2 = 30.001MHz</b>					

**IMPEDANCE DATA**

FREQ	Z <sub>IN</sub> (Ω)	Z <sub>CL</sub> (Ω)
30 MHz	0.57 + j 0.78	0.80 + j 0.43

P<sub>OUT</sub> = 100 WPEP, V<sub>CE</sub> = 12.5 V

**TEST CIRCUIT**


C1 : 9 - 180pF Arco 463  
 C2 : 5 - 380pF Arco 465  
 C3 : 200pF Arco 465  
 C4, C6 : 170pF Arco 469  
 C7 : 0.1μF Ceramic Disc  
 C5, C8 : 1000pF Unelco  
 C9 : 10μF Electrolytic, 35Vdc  
 C10 : 1000μF Electrolytic, 35Vdc

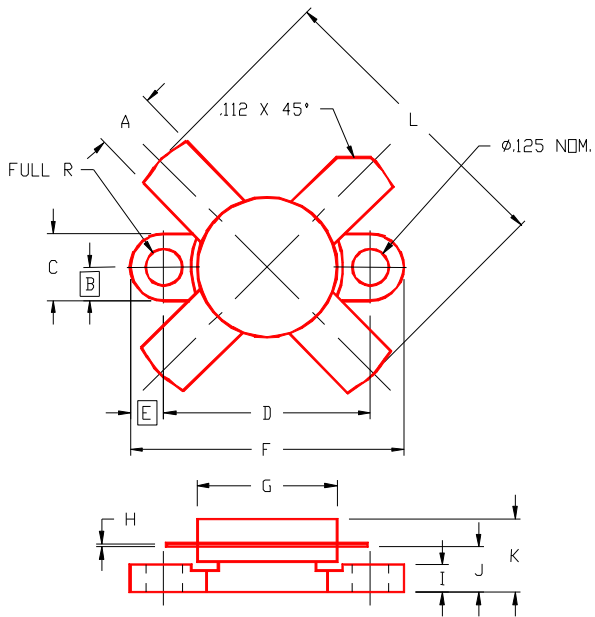
L3 : Copper Strap 1/4" Widht, Length 1 1/2,  
 Height 1/2"  
 L4 : 4 Turns, #16 AWG, Enameled Wire 3/8" I.D.  
 L5 : 5 Turns, #18 AWG on 1/4" I.D. Coil Form  
 Length 1/2", Ferrite Slug

R1, R2,  
 R3 : 1.5 Ohm, 1 Watt Carbon

L1 : 2 1/2 Turns, #14 AWG, I.D. Loose Wound  
 L2 : 16 Turns, #16 AWG, Enameled Wire on  
 Micrometals Torroid #T-94

**MS1051**

PACKAGE MECHANICAL DATA



PACKAGE STYLE M174

	MINIMUM INCHES/MM	MAXIMUM INCHES/MM		MINIMUM INCHES/MM	MAXIMUM INCHES/MM
A	.220/5,59	.230/5,84	I	.090/2,29	.110/2,79
B	.125/3,18		J	.160/4,06	.175/4,45
C	.245/6,22	.255/6,48	K		.280/7,11
D	.720/18,28	.730/18,54	L		1.050/26,67
E	.125/3,18				
F	.970/24,64	.980/24,89			
G	.495/12,57	.505/12,83			
H	.003/0,08	.007/0,18			